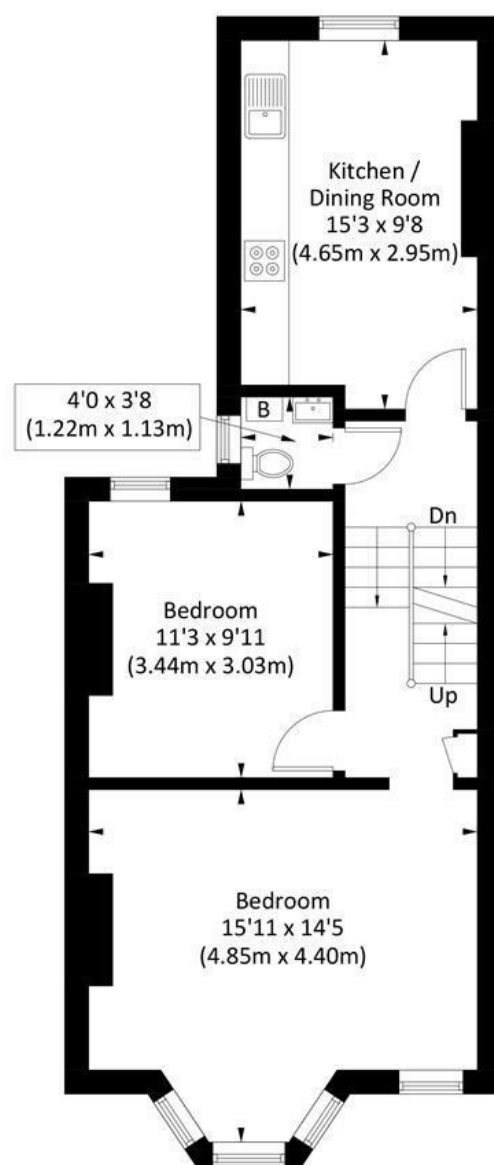


WARREN

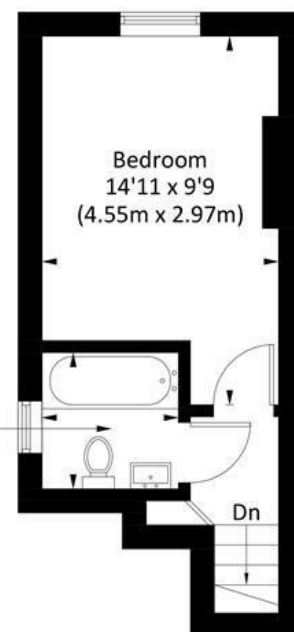
The Putney Estate Agent

MERIVALE ROAD, SW15

Approx. gross internal area 765 Sq Ft. / 71.1 Sq M



**First Floor
(568 Sq Ft.)**



**Top Floor
(197 Sq Ft.)**

Illustration for identification purposes only, measurements are approximate, not to scale. Fourlabs.co © 2025 (ID1226943)

DISCLAIMER•These particulars are intended to give a fair and substantially correct overall description for the guidance of intending purchasers and do not constitute an offer or part of a contract. Prospective purchasers and/or lessees ought to seek their own professional advice.
•All descriptions, dimensions, areas, references to condition and necessary permissions for use and occupation and other details are given in good faith and are believed to be correct, but any intending purchasers should not rely on them as statements or representations of fact, but must satisfy themselves by inspection or otherwise as to the correctness of each of them.
•All measurements are approximate.



WARREN

The Putney Estate Agent

Merivale Road, Putney, SW15

A fantastic, spacious and ideally located two double bedroom split level apartment on the top two floors of this period house in the heart of Putney and moments from the river. Offered on an unfurnished basis, the accommodation comprises an entrance hallway, bright and spacious reception room, kitchen/breakfast room, two double bedrooms, bathroom with shower over the bath and separate WC. This lovely flat is perfectly located within a short walk of all the amenities and transport Putney has to offer. Available mid September 2025.



- SPLIT LEVEL FLAT
- KITCHEN/BREAKFAST ROOM
- BATHROOM
- PRIME LOCATION
- EPC D
- RECEPTION ROOM
- TWO DOUBLE BEDROOMS
- SEPARATE WC
- CLOSE TO RIVER & HIGH STREET
- COUNCIL TAX BAND E

Per Month
£2,250 Per Month

